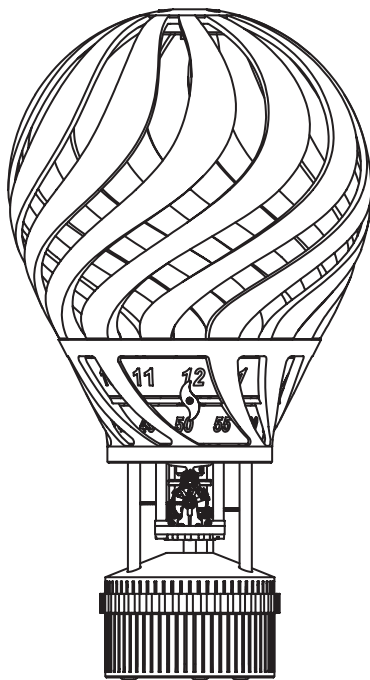




HOT BALLOON

USER INSTRUCTIONS



CONGRATULATIONS

You have just acquired Hot Balloon,
One of the most advanced timepieces of L'Épée 1839.

Designed in partnership with ECAL - University of Art and Design Lausanne, and more pointedly by Margo Clavier during her Master Program in Advanced Studies in Design for Luxury and Craftsmanship.

Hot Balloon has been developed with passion and care by our master watchmakers in Delémont - Switzerland.

IMPORTANT INFORMATION

The movement is placed in the basket of the Hot Balloon, some gears are accessible: please be careful when manipulating the clock.

The clock should never be in contact with any liquids – even in vaporized form. If it occurs, the clock should be serviced immediately. Use only a soft and dry cloth to clean the clock. Dust and particles contained in the cloth could scratch parts. Do not use any kind of cleaning products to wipe the clock. It is recommended to keep the clock distant from any source of heat or vibrations. To preserve the longevity and functionality of Hot Balloon, do not permanently expose the clock to direct sunlight or in a humid/dusty place.

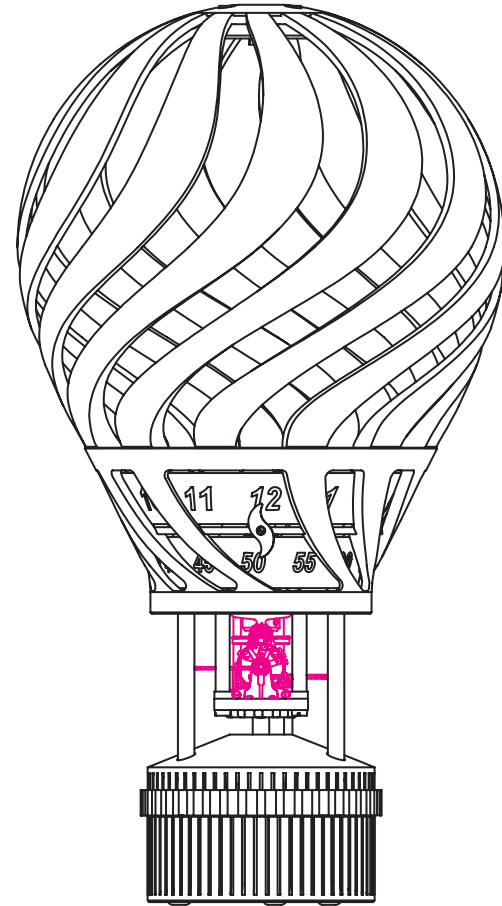
A simple contact on certain pieces can generate delays in timekeeping, which can only be solved by servicing. Fingerprints will also damage the finishings.

Our clocks are developed to ensure optimal accuracy and reliability. It is well accepted for a fine mechanical clock to have a few seconds' variation per day and our clocks are set so as not to delay. However if you should notice a bigger variation, please contact an authorized dealer who will advise you, or a L'Épée 1839 technical support center which will proceed with the necessary adjustment.

As for all Horological pieces of art, it is recommended to periodically service your clock. A mechanical masterpiece requires fine oils for the lubrication of the movement. These oils deteriorate over the years. We therefore advise having the movement serviced every 3 to 5 years. Be aware that the optimal period between servicing times can vary depending on the surrounding environmental conditions.

It is recommended to handle Hot Balloon placing one hand under the basket, and one on the balloon to secure the manipulation.

Zones in red are substantially fragile, make sure to avoid any contact.



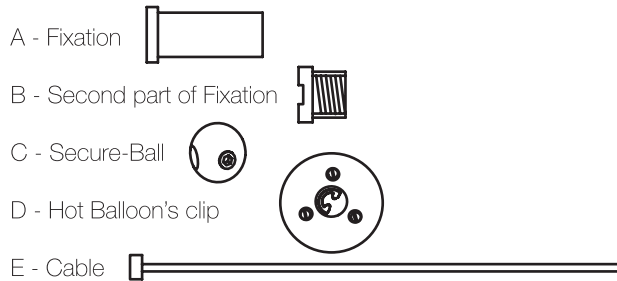
KINETIC SCULPTURE: TABLE / CEILING CLOCK

Hot Balloon can be displayed in two different positions:

TABLE CLOCK: Place the clock in a secure environment to avoid any fall. The clock stands by itself.

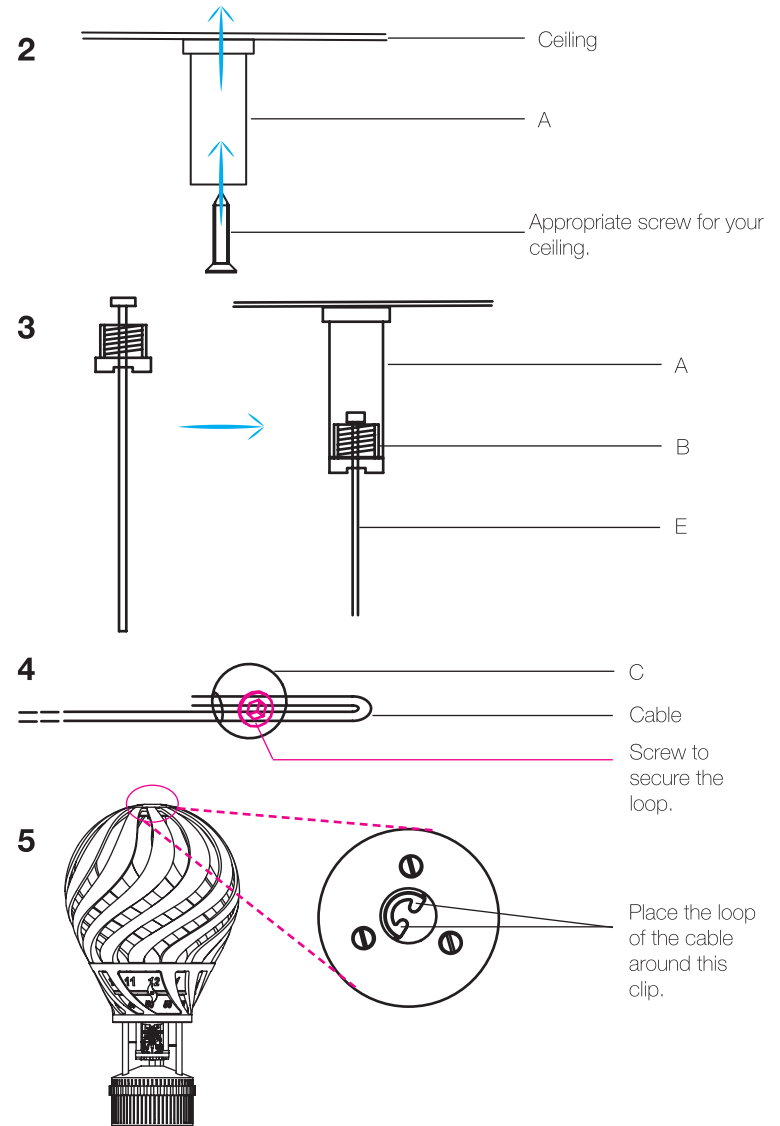
CEILING CLOCK: Hot Balloon can be suspended from the ceiling and fixed on the ceiling with the appropriate fixations according to the material of your ceiling.

Material provided :



How to adjust, attached and suspend the clock:

- 1- Adjust the length of the cable (cut with appropriate tool).
- 2- Fix the fixation A on the ceiling with appropriate screw.
- 3- Place the cable into the second part (B) and then screw B into A.
- 4- At the other end of the cable, make a loop with the cable and screw the ball (C) to secure the cable.
- 5- Place the cable onto the clip on the summit of Hot Balloon (D).
- 6- Test safely before hanging.

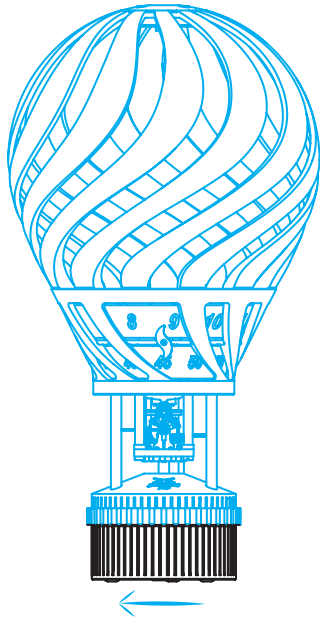


WINDING THE MOVEMENT

The movement should be fully wound every 8 days. Be sure to wind up the spring completely. At the end of the winding procedure, you will feel the necessary force increase significantly; do not wind further as this is the sign that the movement is fully wound.

To wind the movement, you need to turn the basket of Hot Balloon.

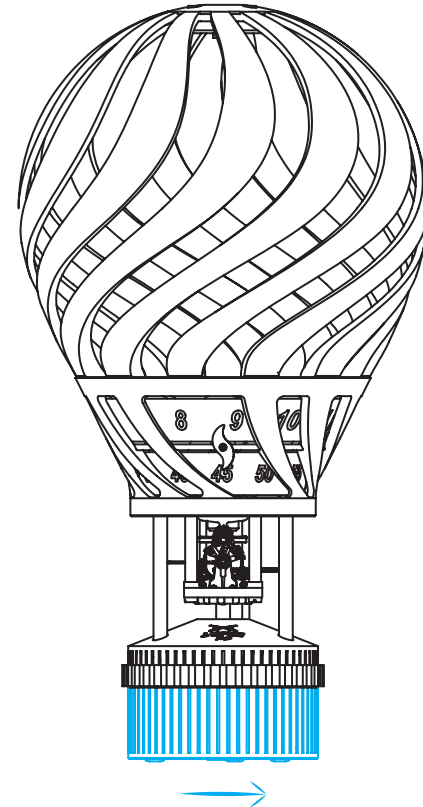
If it is placed on a table, turn the upper part clockwise (here in blue):



Do not execute the rotation with the balloon, apply forces only on the basket.

WINDING THE MOVEMENT

If Hot balloon is suspended, hold the upper part to avoid the clock to fall down, then turn anti-clockwise the lower part (in blue here):

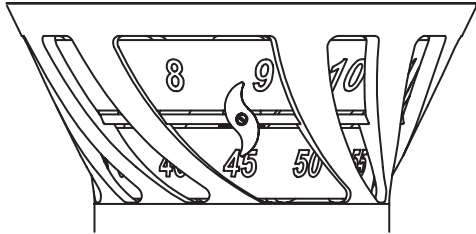


HOURS AND MINUTES DISPLAY

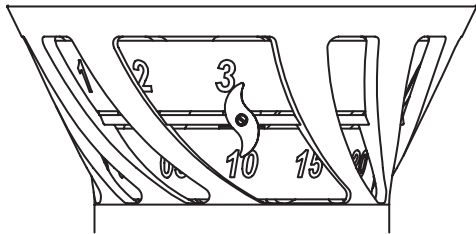
Time is displayed by the central arrow/flame in the front, just on top of the escapement.

Exemple :

8H45

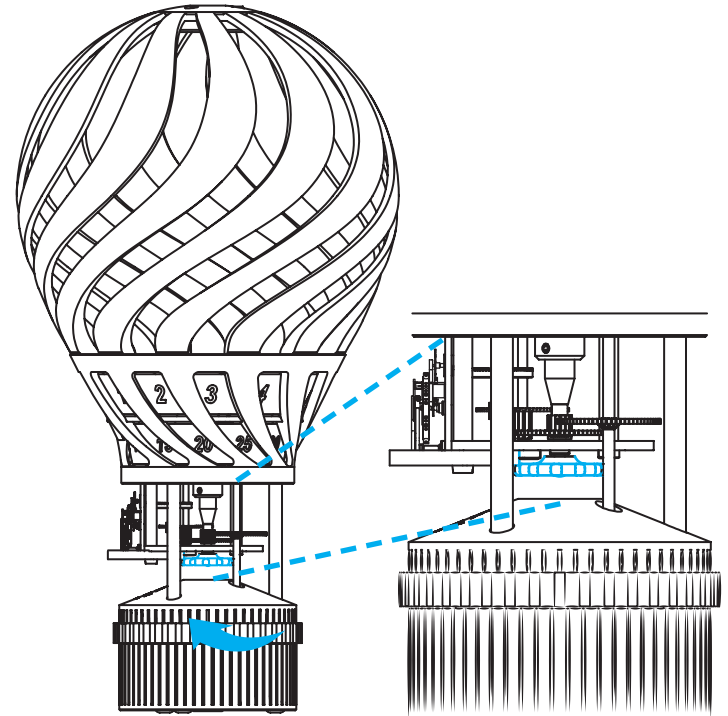


3H10



SETTING THE TIME

Time setting is done with the gear here in blue. Make sure to not touch the escapement or the other gears while manipulating the clock.



L'Epée 1839

Swiza Sa Manufacture
rue St-maurice 1
PO BOX 973
2800 Delémont
Switzerland

Customer Service:
Tel. +41 (0)32 421 94 05
Mail. sav@swiza.ch

www.lepee1839.ch